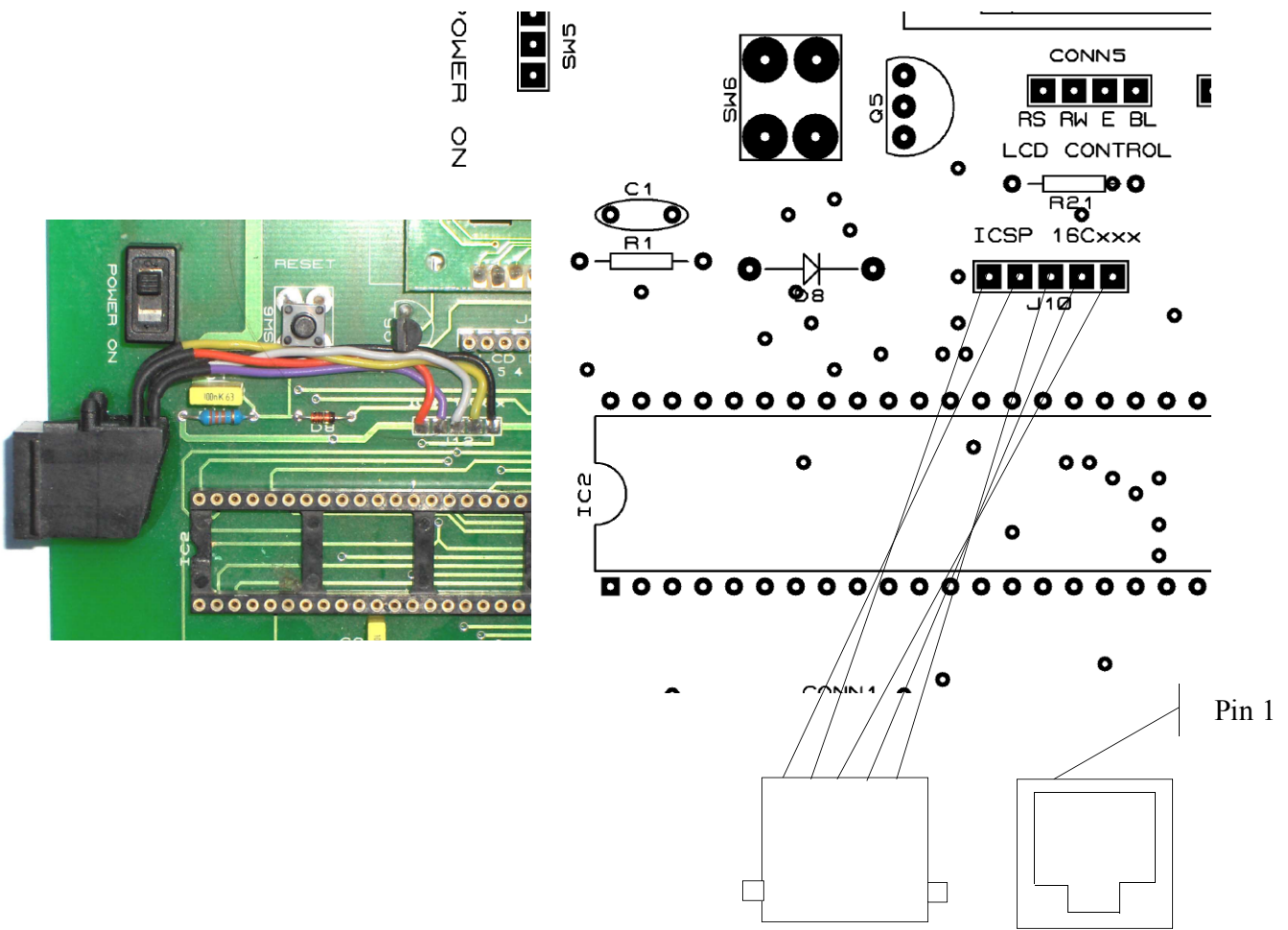


Adding ICD2 compatibility to the Millennium Board



- 1 Wire up an RJ12 socket using pins 1-5 (6 is spare) – add heatshrink where necessary.
- 2 Attach the connector to the left side of the Millennium board.
- 3 When the glue is set, attach the wires to the ICSP connector (J10).
- 4 Inspect to ensure no solder bridges or shorts.
- 5 Do not insert more than one PICmicro at a time into the Millennium board.
- 6 Avoid loading the B6/7 lines while programming – see Microchip ICSP recommendations on this topic.

| RJ12 Socket | Millennium Board J10 | Signal |
|-------------|----------------------|--------|
| Pin 1 | 2 | Reset |
| Pin 2 | 1 (left pin) | +5V |
| Pin 3 | 5 (right pin) | Ground |
| Pin 4 | 4 | B7 |
| Pin 5 | 3 | B6 |
| Pin 6 | unused | |